


■ **产品系列 / Product Series:** 电力保险丝 / Power Fuse

■ **零件系列 / Part Series:** RL06



	<p>结构 / Construction: (RL06 XXA 600VACDC EP)</p> <ul style="list-style-type: none"> • 保险丝组件 / Fuse Element: 金属合金 / Metal Alloy • 本体 / body: 陶瓷管 / Ceramic • 孔铜帽 / Hole Caps: 铜 / Copper • EP端子 / EP Caps: 铜镀镍 / Nickel plated copper • 填充物 / Filler: 石英砂 / Quartz Sand 	<p>特征 / Features:</p> <ul style="list-style-type: none"> • 额定电流 / Rated current, 50A • 额定电压 / Rated Voltage, 600V ACDC • 分断能力 / Breaking capacity, 600VACDC@50KA • 质量 / Mass: <ul style="list-style-type: none"> RL06 XXA 600VACDC EP : 13.3g RL06 XXA 600VACDC CP1: 11.03g • 不含PFAS / PFAS Free • 符合 RoHS 规定无豁免 / RoHS Compliant without exemptions
	<p>结构 / Construction: (RL06 XXA 600VACDC CP1)</p> <ul style="list-style-type: none"> • 保险丝组件 / Fuse Element: 金属合金 / Metal Alloy • 本体 / body: 陶瓷管 / Ceramic • 孔铜帽 / Hole Caps: 铜 / Copper • CP1端子 / CP1 Caps: 铜镀锡 / Copper tinning • 填充物 / Filler: 石英砂 / Quartz Sand 	

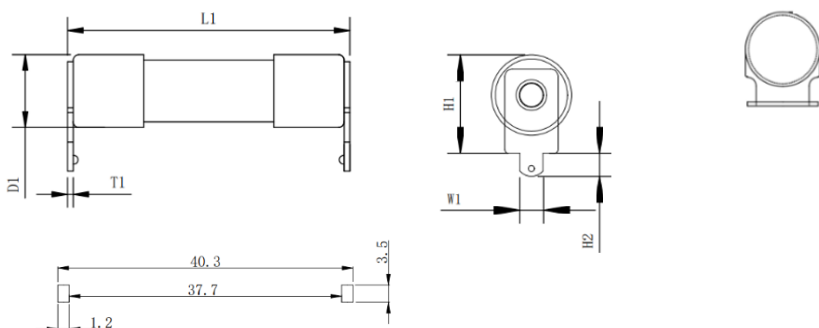
描述 / Description:

RL06系列保险丝, 用于纯电动汽车及混合动力汽车的道路车辆及工业设备熔断器。

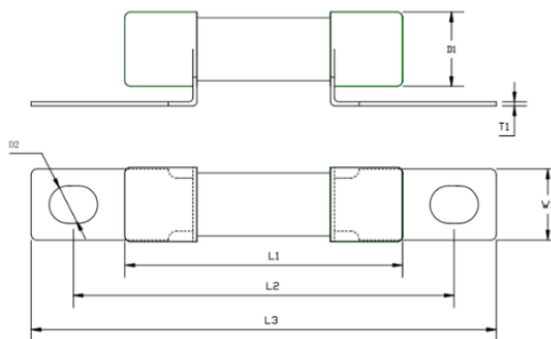
RL06 series Fuses, road vehicles fuse for EV/HEV and hybrid vehicles.

产品尺寸 / Product Dimensions

RL06 XXA 600VACDC CP1



RL06 XXA 600VACDC EP



安装尺寸仅参考, 依据实际应用为准。

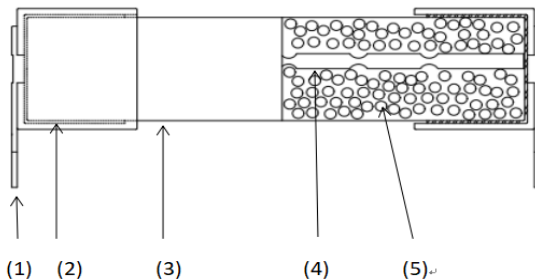
The installation dimensions are for reference only, and are subject to actual application.

单位/Units : (mm)

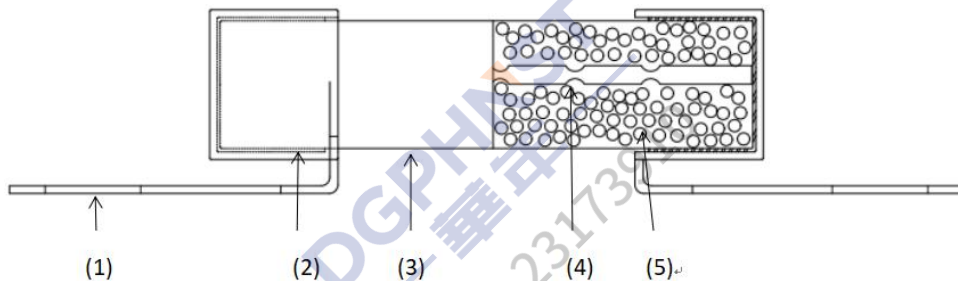
尺寸 (mm) Size (mm)	L1	L2	L3	W1	H1	H2	D1	D2	T1
RL06 XXA 600VACDC CP1	39.0±0.8	/	/	3.0±0.1	13.0±0.5	3.0±0.2	10.5±0.3	/	0.4±0.05
RL06 XXA 600VACDC EP	38.0±0.8	53.5±0.5	65.5±0.8	10.3±0.15	/	/	10.3±0.2	5.3±0.1	0.6±0.16

产品结构 / Product Construction

RL06 XXA 600VACDC CP1



RL06 XXA 600VACDC EP



根据上面的产品尺寸图标注 / Callouts per Product Dimensions diagram above

编号 / No.		组件 / Component	材质 / Material	数量 / Quantity
RL06 XXA 600VACDC CP1	1	CP1端子 / CP1 Cap	铜镀锡 / Copper tinning	2
	2	孔铜帽 / Cap	铜 / Copper	2
	3	本体 / Body	陶瓷管 / Ceramic Tube	1
	4	熔体 / Wire	合金 / Alloy	1
	5	填充物 / Filler	石英砂 / Quartz Sand	/
RL06 XXA 600VACDC EP	1	EP端子 / EP Cap	铜镀镍 / Nickel plated copper	2
	2	孔铜帽 / Cap	铜 / Copper	2
	3	本体 / Body	陶瓷管 / Ceramic Tube	1
	4	熔体 / Wire	合金 / Alloy	1
	5	填充物 / Filler	石英砂 / Quartz Sand	/

零件编号 / Part Numbering: RL06 XXA 600VACDC CP1 / RL06 XXA 600VACDC EP

序列 Series Number	额定电流 Rated Current	额定电压 Rated Voltage	脚型代码 Foot code
RL06	50A	600V ACDC	CP1 EP

标示 / Marking

- 保险丝上需有下列标示 / The following markings shall be required on the fuse

①: 制造工厂的标示+系列号

The Manufacture' s Logo +Part Number



②: 额定电流+额定电压 / Rated Current(A) + Rated Voltage(V)

商标符号®如果不清晰, 则可以省略/ If the trademark symbol ® is not clear, it can be omitted

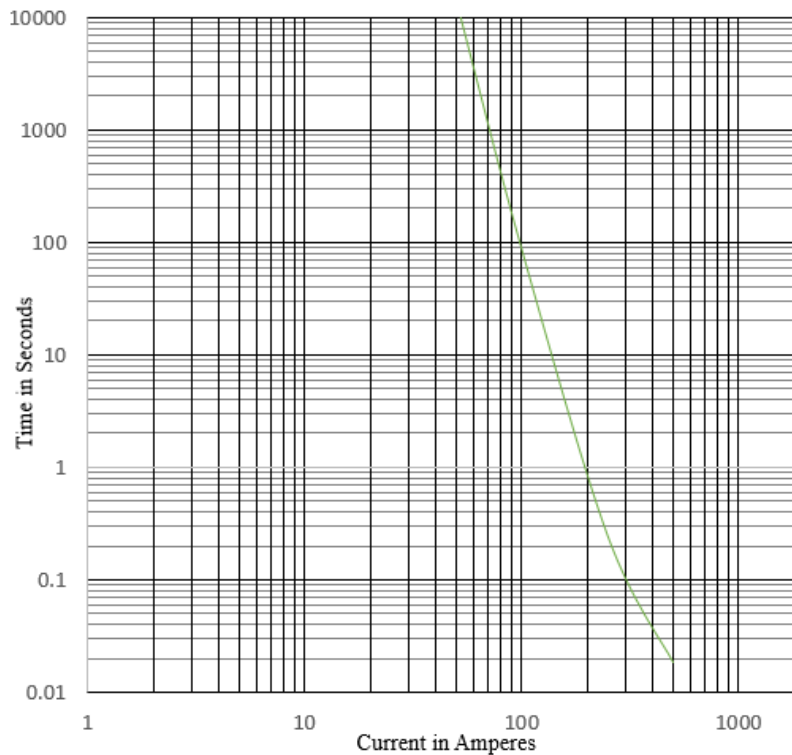
注: 此I²t值为产品10In时的参考值 / Typical Pre-arching I²t are measured at 10In Current

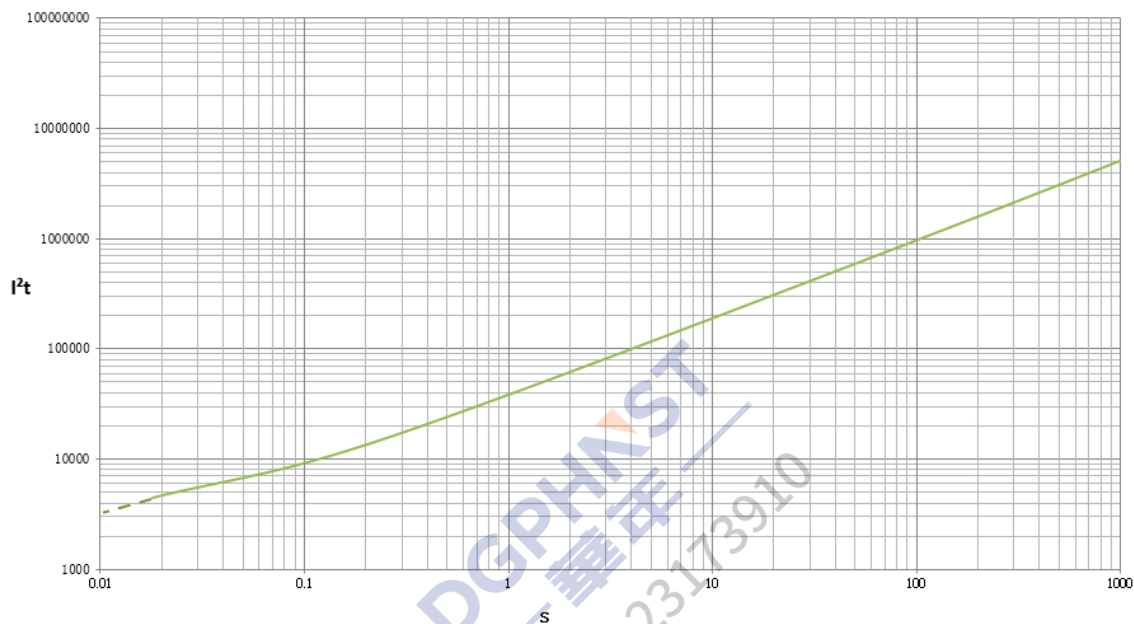
额定电流 Rated Current	1.0In	2.0In
	Min	Max
50A	4 Hour	100s

电气规格 / Electrical Specifications

额定电流 Rated Current	冷电阻范围 Cold Resistance Range (mΩ)	电压降 Typical Voltage (mV)	I ² t值 Typical value (A ² Sec)	分断能力 Breaking Capacity
50A	1.7~3.3	250	4545	600VACDC&50KA

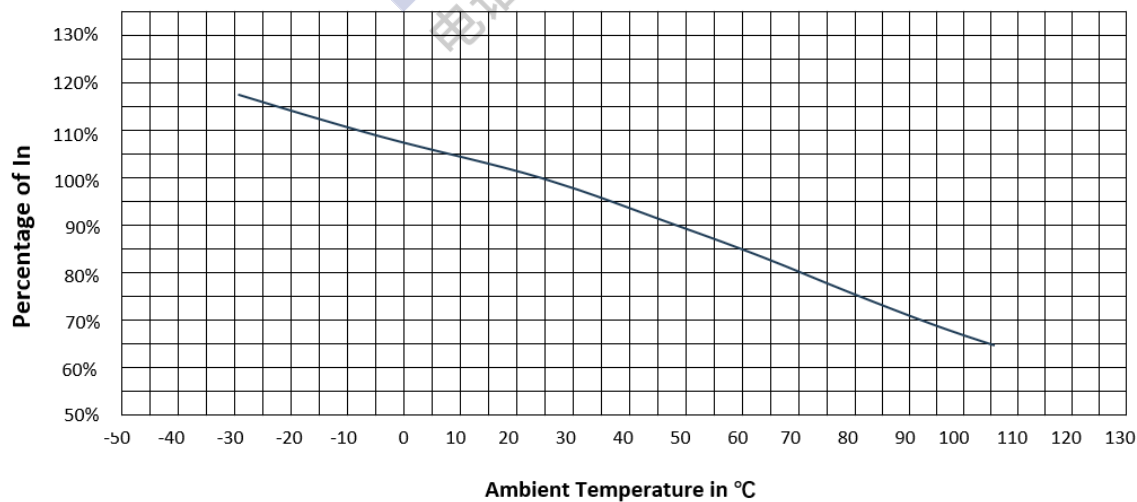
时间电流曲线 / Time Current Curves



I²t-T 曲线 / I²t-T Curves

温度电流曲线 / Temperature Current Curve

Temperature Re-Rating Curve



建议客户焊接参数 / Recommended Customer Soldering Parameters

- 波峰焊参数 / Wave Parameters
- 锡炉温度 / Solder Pot Temperature: 270°C MAX
- 焊接时间 / Solder Dwell Time: 10s Max

安全认证及编号 / Standards and Approvals

UL	E483392
TUV	J 50681584

安装方法及参数 / Installation Method and Parameters

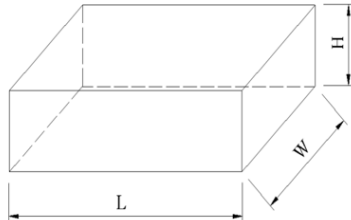
- RL06 XXA 600VACDC CP1
用PCB板安装 / Mounted with a PCB board
- RL06 XXA 600VACDC EP
推荐紧固扭矩 4.5+/-1Nm(M5/ recommend tighten torque 4.5+/-1Nm(M5)

包装 / Packaging

规格/Specs	内盒/Inner box	外箱/Outer carton
RL06	Pending	Pending

备注：包装方式会以实际状况进行调整 / Note: The packaging method will be adjusted according to the actual condition

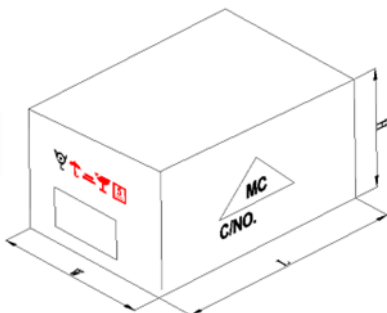
内盒包装 / Inner Box of Packing



单位 / Unit: mm

规格/Specs	L	W	H
RL06	Pending	Pending	Pending

外包装箱 / Outer Box of Packing



单位 / Unit: mm

类别 / Category	L	W	H
RL06	Pending	Pending	Pending

储存条件 / Storage Conditions

- 在温度+10°C~60°C、相对湿度 \leq 75%的密闭条件下可存放3年
Under airtight in temperature+10°C~60°C relative humidity \leq 75% can store 3 years.
- 在温度+10°C~60°C、相对湿度为95%的非露天下最多可存放30天
Without dew in temperature+10°C~60°C relative humidity of 95% maximum value for 30 days.

其他 / Others

- 如果在使用中有超出本规格书的要求，必须经由双方协商确认。
In the event that an impropriety is found beyond this specification, it shall be fixed by mutual agreement between the parties.
- 如果本规格书有不适当的情况，必须通过双方协商并由本公司修改。
In the event that an impropriety is found in this specification, SUZHOU WALTER ELECTRONIC CO., LTD. shall amend it by mutual agreement between the parties.

